



GLOBAL RELAY ARCHIVE: MAXIMIZING COMPLIANCE, MINIMIZING RISKS

Preserving data for compliance recordkeeping, supervision, and business continuity is a constant challenge for many firms.

Most company data reside in disparate storage systems, employee computers, and physical media – with multiple copies and no single source of indexing or access. These systems complicate data management, search, and recovery, and expose data to various risks.

Global Relay Archive changes all of that. Since 1999, Global Relay Archive has been helping organizations preserve, manage, and derive greater value from their data. It ensures firms meet their compliance obligations, and minimize their risk exposure.

FEATURES



UNIFIED DATA ARCHIVING

Global Relay Archive captures and preserves over 60 data types in a secure, unified, and private cloud. It creates a permanent, tamperproof copy of all electronic messages, and provides users with intuitive tools to search, access, and retrieve them – even if the original message has been deleted.



COMPLIANT RECORDKEEPING

Purpose-built for compliance, Global Relay Archive enables regulated financial firms to meet the stringent recordkeeping requirements of the SEC, FINRA, CFTC, FCA, IIROC, and other regulators. All eComms and trade data is preserved in a non-rewriteable, non-erasable (WORM) format that meets evidentiary standards.



POLICY-BASED SUPERVISION

Global Relay Archive equips compliance officers, HR managers, and other reviewers with the latest, most advanced monitoring, flagging, and reporting tools. These tools help ensure staff compliance with regulatory and corporate policies – and enable timely detection of violations and appropriate company response.



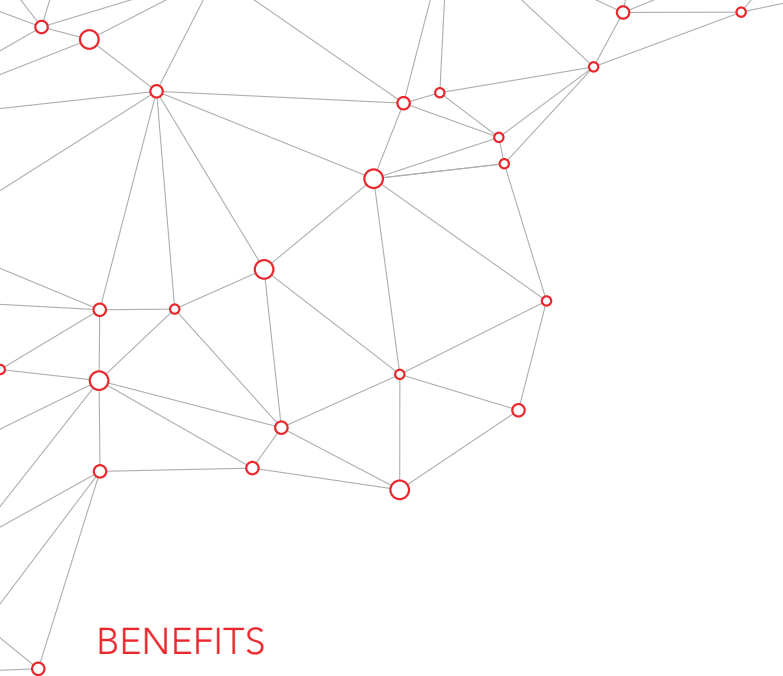
eDISCOVERY, LEGAL HOLD & ANALYTICS

To meet specialized message surveillance and retention requirements, Global Relay Archive provides class-leading analytics, data visualization, eDiscovery, and legal hold tools. These tools help firms detect anomalies in data, uncover message participants and their relationships, and defensibly preserve relevant data when litigation is anticipated.



SPEED, AGILITY & SCALABILITY


Global Relay Archive was designed to meet enterprise Big-Data storage and rapid-search needs. It can dynamically scale to growing user counts, and support over 400,000 users in a single archive. With search speeds across petabytes of data measured in seconds, Global Relay Archive enables firms to promptly respond to regulatory and legal information requests.




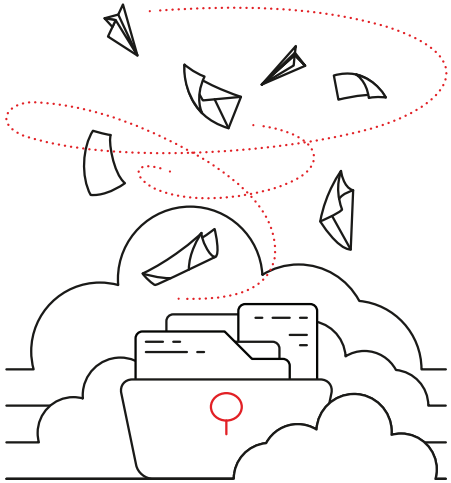
CONTACT


Visit: globalrelay.com
Call: North America: 866 484 6630
 Europe: +44 (0) 203 206 1850
Email: info@globalrelay.net

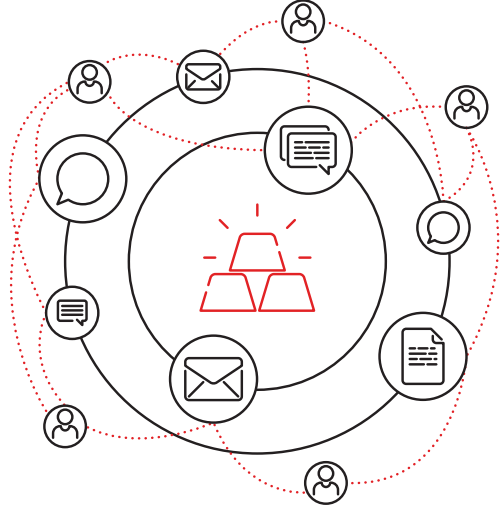
BENEFITS


 **Reduced & Predictable Costs:** As a cloud solution, Global Relay Archive eliminates costly capital expenses associated with on-premise data storage system: software, hardware, and IT support. Global Relay charges predictable monthly subscription fees based on number of active users.

 **Efficient Data Management:** Global Relay Archive eliminates the dependence on fragmented backup and storage systems and multiple data silos. It consolidates all messages in a single, unified repository, facilitating location of critical data for eDiscovery searches, legal hold placements, and information requests.



 **Single System of Record:** Global Relay Archive functions as a system of record – the single source of truth for all of a company’s business and trade communications. It preserves a ‘gold copy’ of every message, legally admissible evidence establishing ‘who said what, when, to whom.’



 **Dependable Recovery Solution:** Global Relay’s cloud service is hosted in two mirrored data centers, with data replicated to the secondary data center in near-real time. Four copies of every message – two in each data center – are preserved, ensuring firms never lose any of their messages.

